



PROPERTY REPORT

811 DOGWOOD ST
Coquitlam BC
V3J 4C1
Canada

PID: 009-602-291

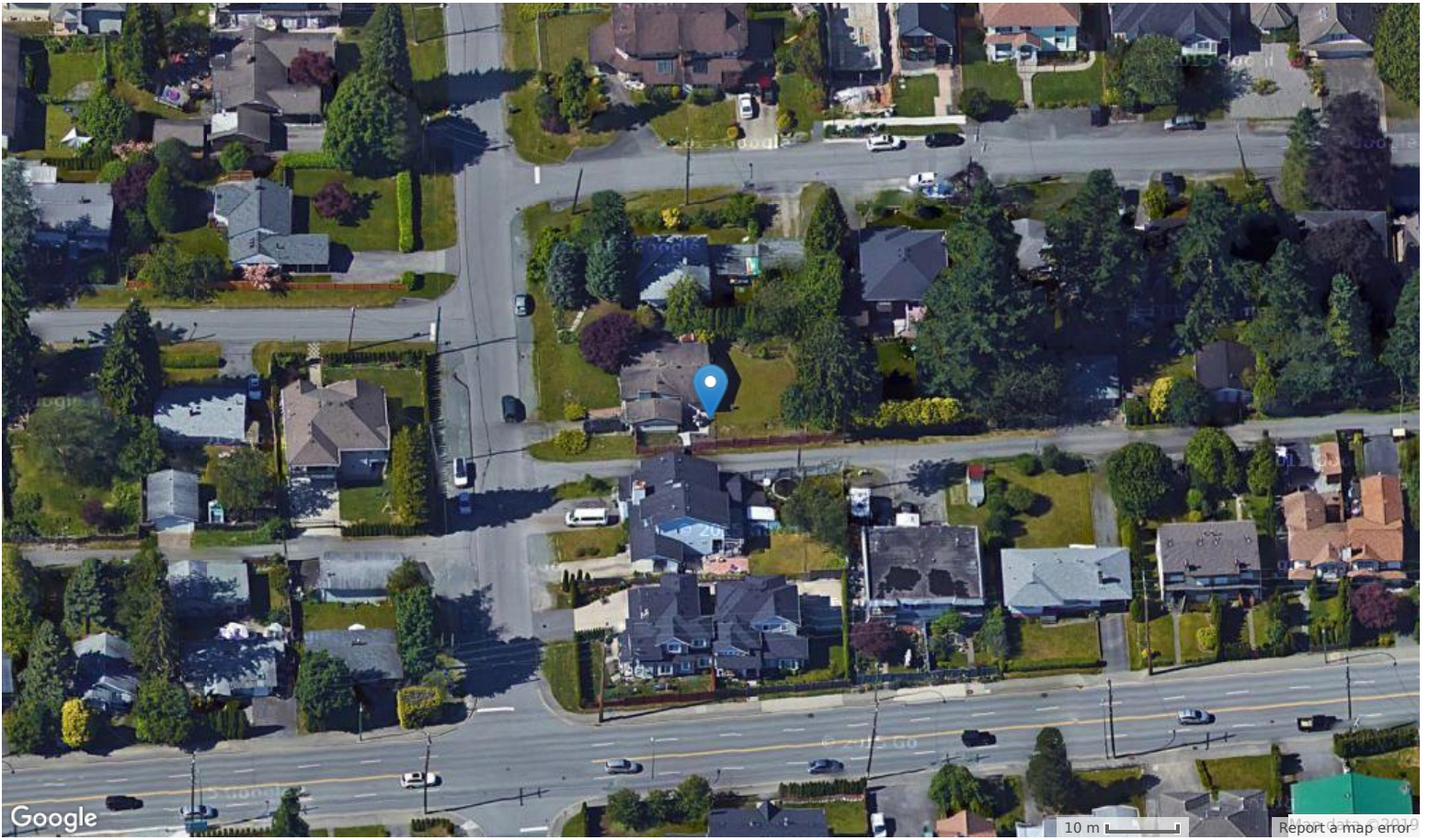
SEPTEMBER 17, 2019

Katayoon Webb PREC*
RE/MAX Crest Realty
Vancouver
P: +1604-315-8715
katayoonwebb@remax.net

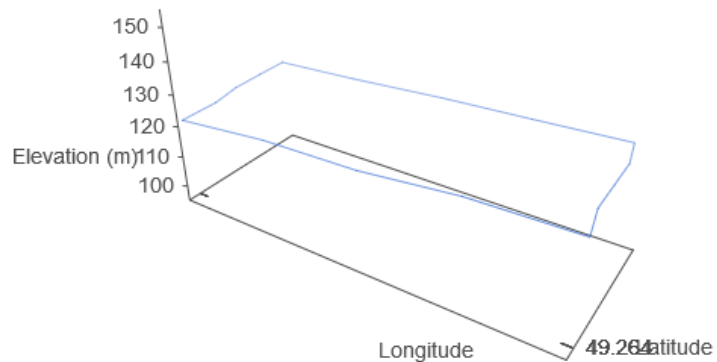


Google

© Google



Property Boundary and Topography



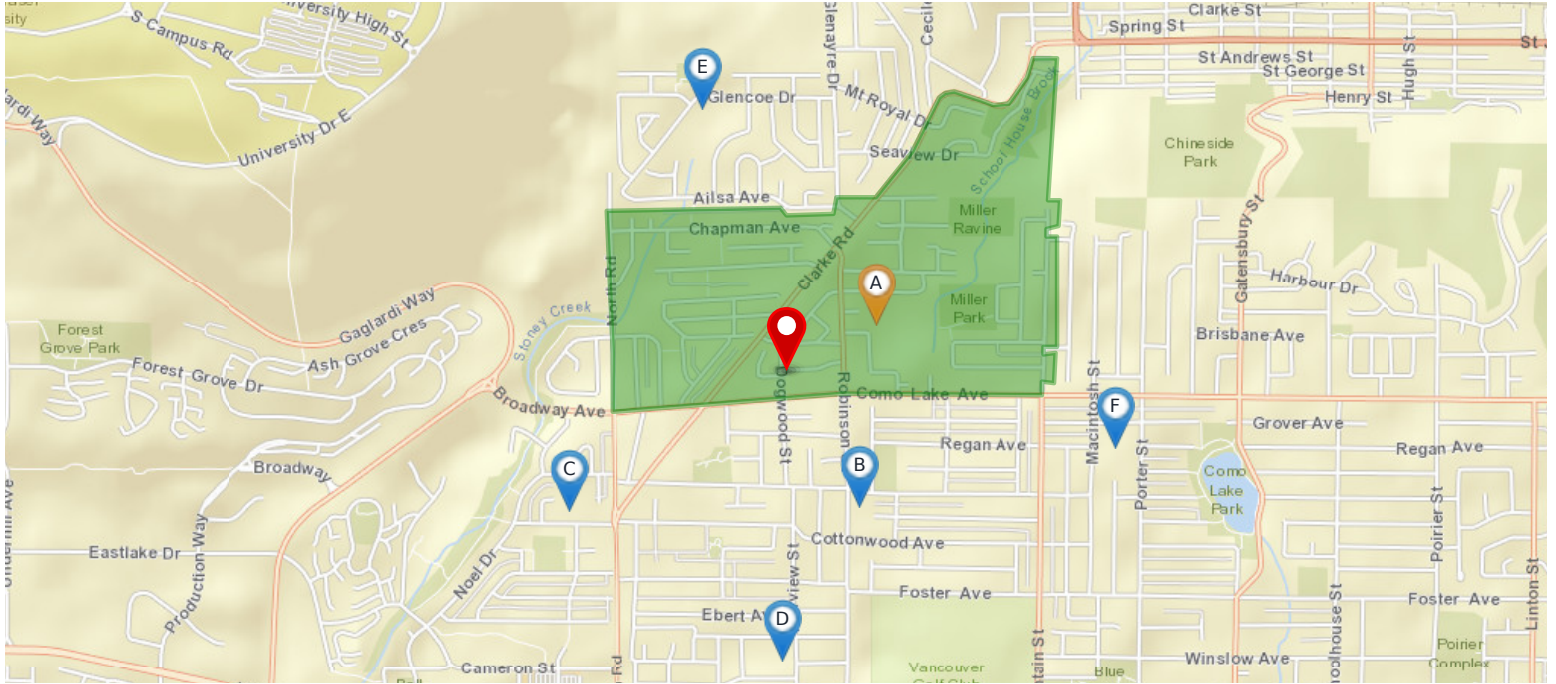
Max Elevation: 127.26 m | Min Elevation: 122.71 m | Difference: 4.54 m

Detailed Tax Report

Property Information								
Prop Address	811 DOGWOOD ST	Jurisdiction	CITY OF COQUITLAM					
Municipality	CITY OF COQUITLAM	Neighborhood	BURQUITLAM					
Area	COQUITLAM	SubAreaCode	VCQCW					
PropertyID	009-602-291	BoardCode	V					
PostalCode	V3J 4C1							
Property Tax Information								
TaxRoll Number	10233000	Gross Taxes	\$7,907.92					
Tax Year	2019	Tax Amount Updated	07/22/2019					
More PIDS								
009-602-291								
More PIDS2								
Legal Information								
PlanNum	Lot	Block	LotDist	LandDist	Section	Twnship	Range	Meridian
NWP11867	2		107	36				
Legal FullDescription								
LOT 2, PLAN NWP11867, DISTRICT LOT 107, NEW WESTMINSTER LAND DISTRICT								
Land & Building Information								
Width			Depth					
Lot Size	9675 SQUARE FEET			Land Use				
Actual Use	SINGLE FAMILY DWELLING							
Year Built	1951							
BCA Description	1 STY SFD - AFTER 1930 - STD			Zoning				
WaterConn								
BCAData Update	04/09/2019							
Supplementary Property Info								
BedRooms	3			Foundation			CRAWL	
Full Bath	1			Half Bath2				
Half Bath3				Stories			1	
Pool Flg				Carport			0	
Garage S	1			Garage M			0	
Actual Totals								
Land			Improvement			Actual Total		
\$2,181,000.00			\$16,800.00			\$2,197,800.00		
Municipal Taxable Totals								
Gross Land	Gross Improve	Exempt Land	Exempt Improve	Municipal Total				
\$2,181,000.00	\$16,800.00	\$0.00	\$0.00	\$2,197,800.00				
School Taxable Totals								
Gross LandSch	Gross ImproveSch	Exempt LandSch	Exempt ImproveSch	School Total				
\$2,181,000.00	\$16,800.00	\$0.00	\$0.00	\$2,197,800.00				
Sales History Information								
Sale Date	Sale Price	Document Num	SaleTransaction Type					
4/9/2019	\$2,197,800.00	CA7438232	REJECT - NOT SUITABLE FOR SALES ANALYSIS					

Nearest Schools with Ranking

Nearby Elementary Schools

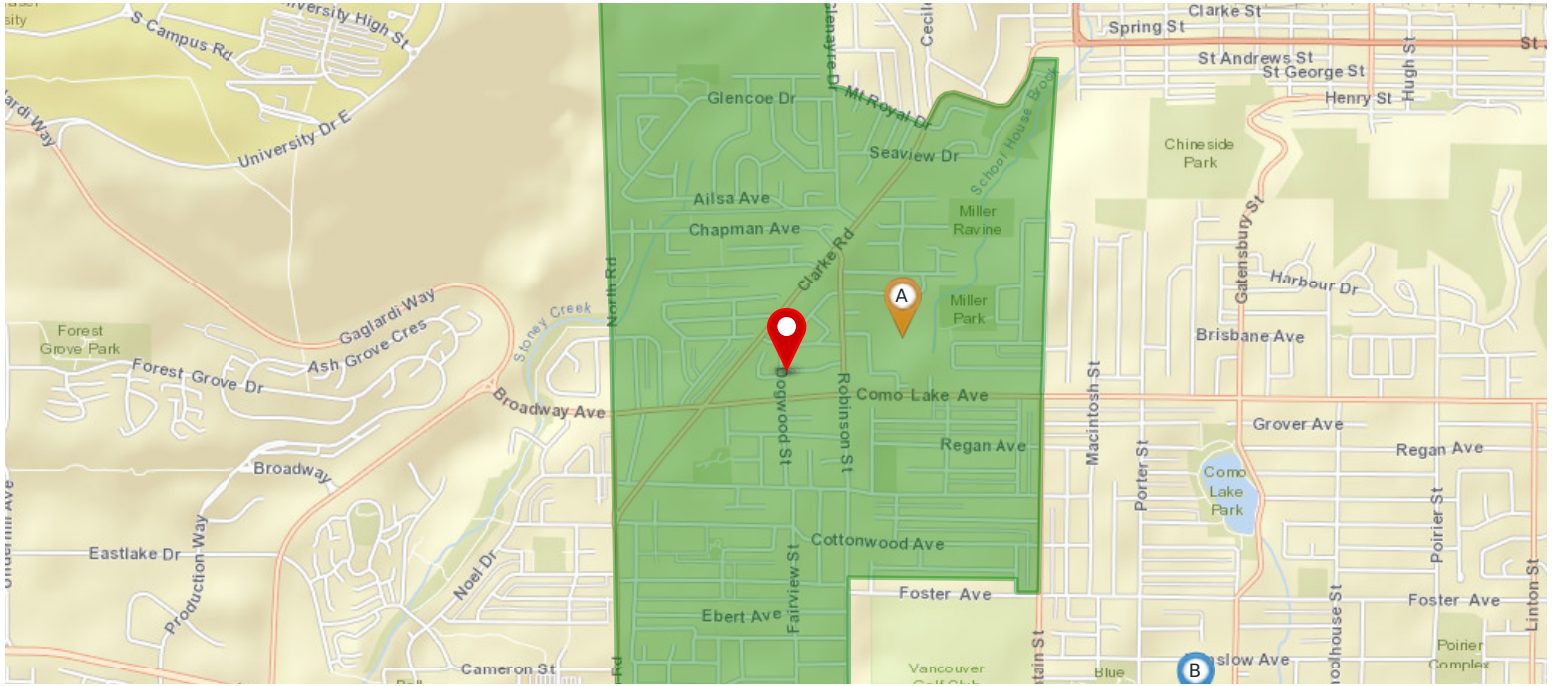


Legend: Subject Property Catchment School Other Schools

Elementary School Catchment: Miller Park Community Elementary School -

School's Name	Grades Covered	2017-2018 Rating	5-year Average Rating	2017-2018 Rank	5-year Average Rank	City	Special Notes/Programs	Walking Time	Distance	Driving Time	Transit Time
A Miller Park	K - 5	5.8	5.9	512/955	429/805	Coquitlam	Montessori	6 mins	0.5 km	2 mins	6 mins
B Mountain View	K - 5	7.2	6.1	195/955	385/805	Coquitlam		11 mins	0.8 km	2 mins	10 mins
C Lyndhurst	K - 7	n/a	n/a	n/a	n/a	Burnaby		14 mins	1.2 km	7 mins	11 mins
D Roy Stibbs	K - 5	5.7	6.2	541/955	359/805	Coquitlam	StrongStart	16 mins	1.3 km	4 mins	16 mins
E Glenayre	K - 5	7	6.8	237/955	232/805	Port Moody	Early French Immersion	23 mins	1.8 km	5 mins	17 mins
F Porter Street	K - 5	6.4	6.2	376/955	359/805	Coquitlam	Early French Immersion	26 mins	1.9 km	4 mins	11 mins

Nearby Middle Schools

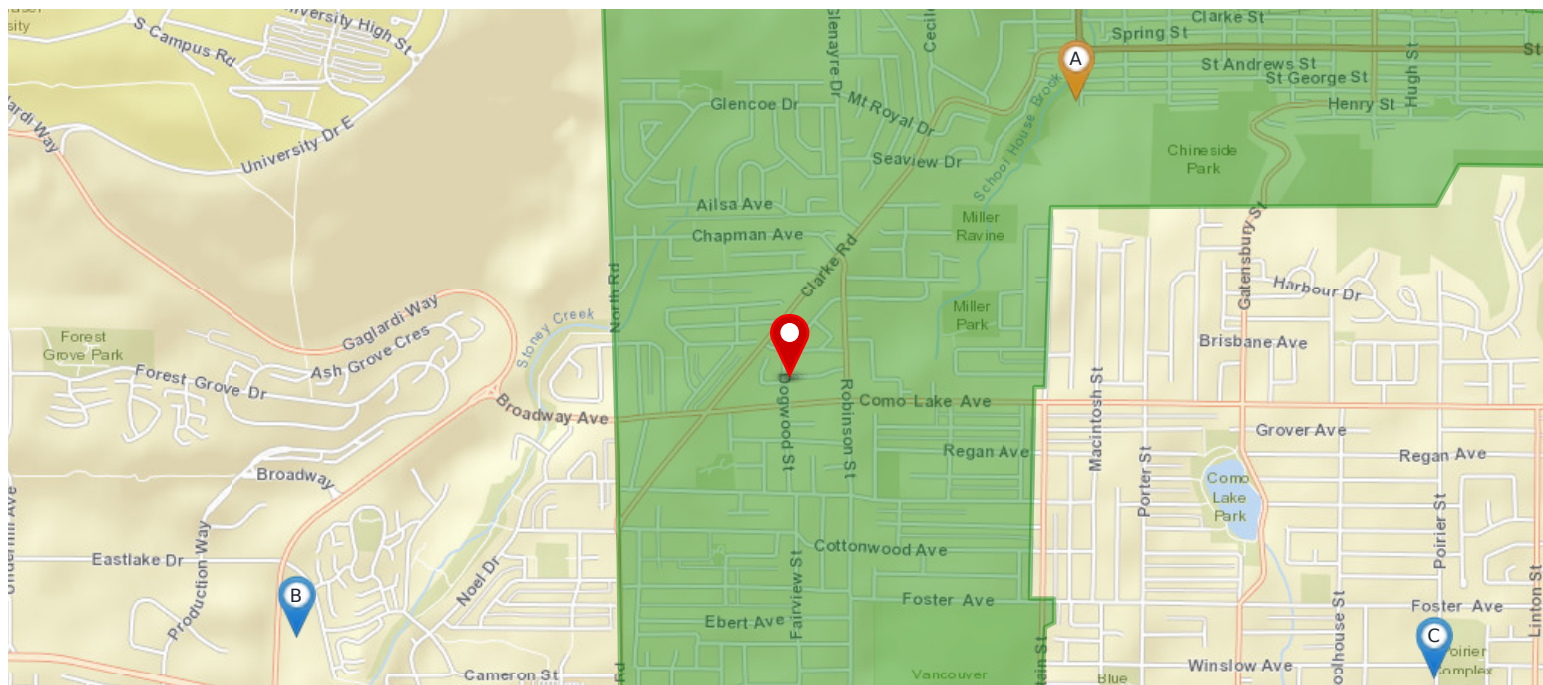


Legend: Subject Property Catchment School Other Schools

Middle School Catchment: **Banting Middle School** -

School's Name	Grades Covered	2017-2018 Rating	5-year Average Rating	2017-2018 Rank	5-year Average Rank	City	Special Notes/Programs	Walking Time	Distance	Driving Time	Transit Time
A Banting Middle	6 - 8	n/a	n/a	n/a	n/a	Coquitlam	Middle French Immersion	8 mins	0.6 km	2 mins	5 mins
B Como Lake Middle	6 - 8	n/a	n/a	n/a	n/a	Coquitlam		39 mins	3.1 km	6 mins	20 mins
C Maillard Middle	6 - 8	n/a	n/a	n/a	n/a	Coquitlam	Middle French Immersion; StrongStart	51 mins	4.1 km	8 mins	20 mins
D Moody Middle	6 - 8	n/a	n/a	n/a	n/a	Port Moody	StrongStart	53 mins	4.3 km	7 mins	21 mins
E Hillcrest Middle	6 - 8	n/a	n/a	n/a	n/a	Coquitlam		50 mins	3.8 km	9 mins	12 mins
F Montgomery Middle	6 - 8	n/a	n/a	n/a	n/a	Coquitlam		1 hour 8 mins	5.4 km	10 mins	25 mins

Nearby Secondary Schools



Legend: Subject Property Catchment School Other Schools

Secondary School Catchment: Port Moody Secondary School -

School's Name	Grades Covered	2017-2018 Rating	5-year Average Rating	2017-2018 Rank	5-year Average Rank	City	Special Notes/Programs	Walking Time	Distance	Driving Time	Transit Time
A Port Moody	9 - 12	5.4	6.1	164/253	121/246	Port Moody	IB Program (DP)	29 mins	2.3 km	5 mins	26 mins
B Burnaby Mountain	8 - 12	6.8	6.2	77/253	112/246	Burnaby	AP Program	34 mins	2.8 km	8 mins	23 mins
C Centennial	9 - 12	4.6	5.2	204/253	181/246	Coquitlam	AP Program	49 mins	3.8 km	7 mins	12 mins
D Carver Christian	8 - 12	7.7	7.5	30/253	38/246	Burnaby	Independent Christian School; AP Program	57 mins	4.4 km	10 mins	57 mins
E Inquiry Hub	9 - 12	n/a	n/a	n/a	n/a	Coquitlam		1 hour 0 mins	4.7 km	9 mins	23 mins
F Cariboo Hill	8 - 12	5.5	5.2	159/253	181/246	Burnaby	French Immersion; AP Program	1 hour 11 mins	5.4 km	12 mins	36 mins

811 DOGWOOD ST Coquitlam, V3J 4C1



Somewhat Walkable

Some errands can be accomplished on foot



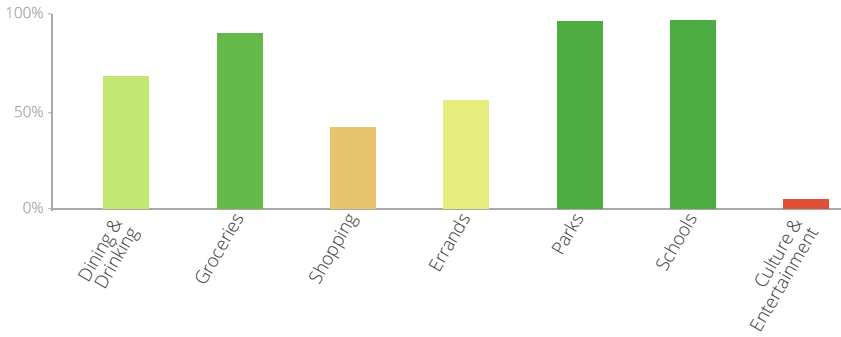
Good Transit

Many nearby public transportation options



Bikeable

The Walk Score here is 60 out of 100 based on these categories. [View a map](#) of what's nearby.



Get scores for your address

