

Katayoon Webb

604.315.8715

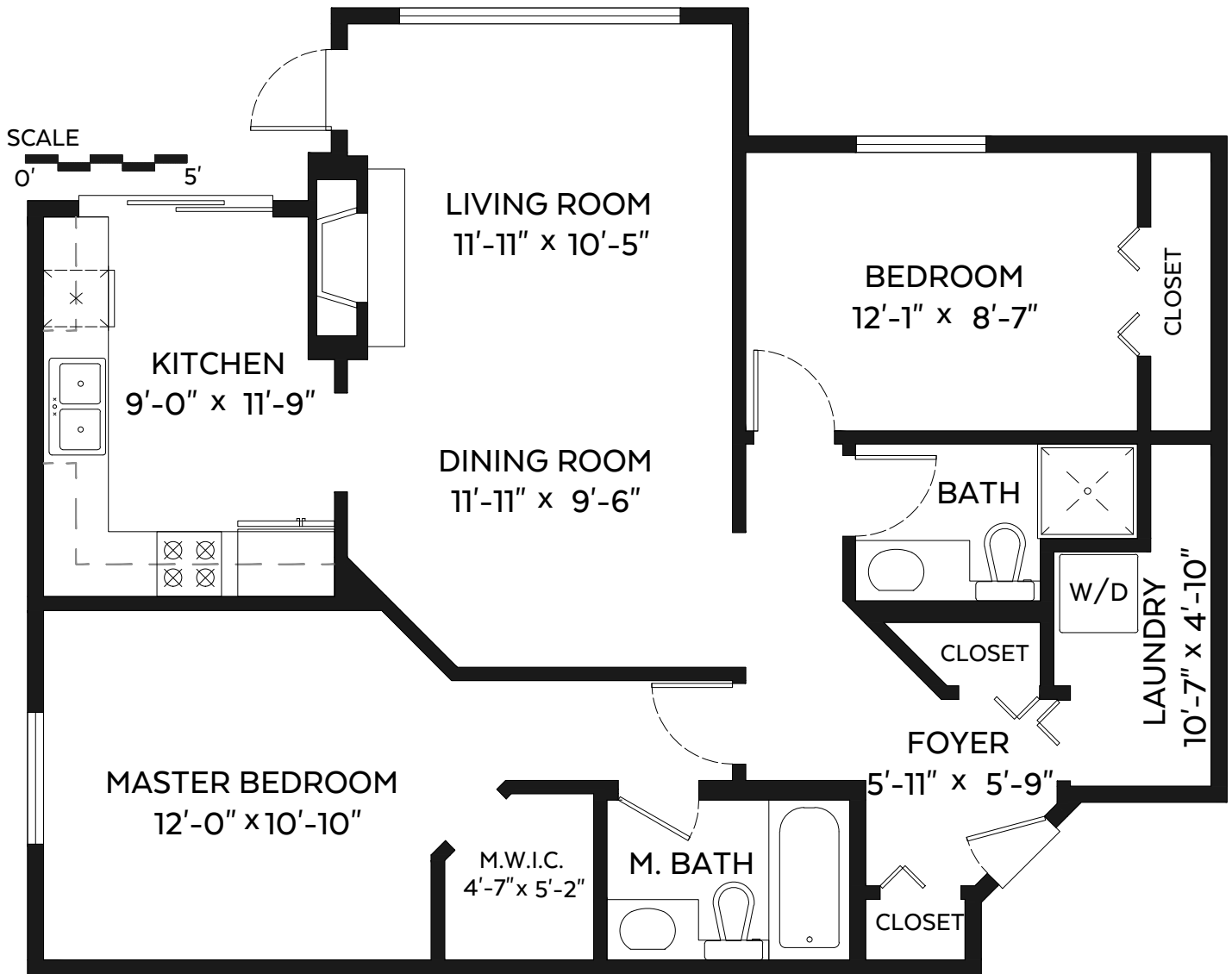
YOUR FRIENDLY REALTOR

www.katayoonwebb.com homes@katayoonwebb.com

#103 - 2559 Parkview Lane,
Port Coquitlam, B.C.

Main Floor:

962 sq.ft.



The floor plan is not suitable for architectural/construction, square
footage-method ANSI Z765 used & is covered under E&O

